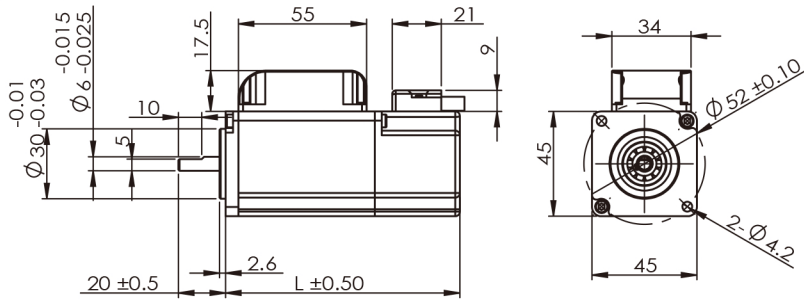


# SMP45(M)H | Servo



L=100.5 (SMP45XXH)  
L=82.4 (SMP45XXMH)

## Motor Data

1	motor model		SMP4524H	SMP4524MH	
2	nominal power	PR	162		W
3	nominal voltage	VT	24		V
4	nominal current	IR	9.5		A
5	instantaneous maximum current	IP	28.5		A
6	nominal speed	NR	5000		rpm
7	maximum speed	NP	6000		rpm
8	nominal torque	TR	0.31		Nm
9	peak torque	TP	0.93		Nm
10	torque constant	KT	0.03		Nm / A
11	back EMF constant	Ke	3.4		V / Krpm
12	rotor inertia	J	0.43		Kg*cm <sup>2</sup>
13	terminal resistance	R	0.26		Ω
14	cogging and hysteresis torque	Tc Th	0		mNm
15	terminal inductance	L	12.4		μH
16	mechanical time constant	Tm	28		ms
17	electric time constant	Te	0.07		ms
18	number of pole pairs	2p	3		
19	weight of motor	W	0.6		Kg
20	encoder options		incremental (2500PPR) \ Absolute (17/33 bit)	incremental (2500PPR)	
21	motor insulation class			class B	
22	protection class			IP64	
23	ambient temperature			-20--+40°C	

## Graph

A: Continuous Working Area  
B: Repeatedly Working Area

